



# Registration Bulletin

by Kenda Ponder  
Registration Department Manager

## Breeders Directory--2008

If you have not already notified the National Office of any changes regarding addresses (especially for new 911 changes), phone and fax numbers, e-mail addresses, please do so immediately to ensure that information is correct for the 2008 Breeders Directory. The deadline for changes is December 18th and information may be submitted as follows: in writing to the National Office, attention - Judy Edwards; e-mail - info@redangus.org or judy@redangus.org, fax 940-383-4036.

## November 2007: Fall 2007 Heifer Exposure Inventory

A pre-printed inventory has been mailed to determine a member's yearling heifer inventory. The member is to indicate breeding season dates, exposure information, management group designation and disposal information. The heifer exposure inventory is due back by February 15, 2008. The heifer exposure is also available on-line for completion. The only information required to complete the heifer exposure inventory is:

- Whether or not the heifer was exposed, or will be exposed to breeding in pasture, A.I. or both - simply mark Yes or No.
- Management group designation
- Any coded disposal information

## December 2007: Fall 2007 Annual Assessments

These will be billed starting in December with the 1st installment (20% of the total of the Fall THR assessments). The 1st installment billing will be included on your December statement. The Fall assessments will be billed in five monthly installments, unless you have eight animals or less, in which case you will then be billed in one installment.

## Website Update

### Search Tools - New Look

When you move your mouse over the question mark box - a box will appear explaining what information is to be entered and how in order to query animals (Figure A). The direct link to the extended pedigree is no longer listed, however to get to it is very easy, simply click on the registration # once listed from your query options and the extended pedigree will be viewed.

**Animal Search** - Previously called "EPD Lookup" & "Extended Pedigree", this search allows you to search for one or more animals based on registration #s, tattoos, or animal names. The results include the EPDs, and link to a full page with performance and pedigree information. (Figure A)

**EPD Search** - Previously called "Sire

Search", this search allows you to search for animals (bulls or cows) based on EPD criteria you specify. The results include the EPDs & group information, and link to the full animal page (with EPDs, performance, and pedigree information). (Figure B)

**Member Search** - This search is still named the same, but allows you to search for multiple members by separating criteria with spaces or commas, as well as sort the results by clicking the table heading. (Figure C)



Figure A



Figure B

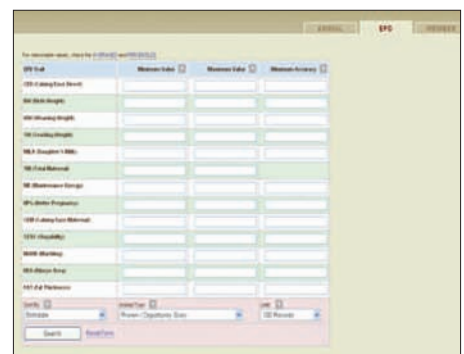
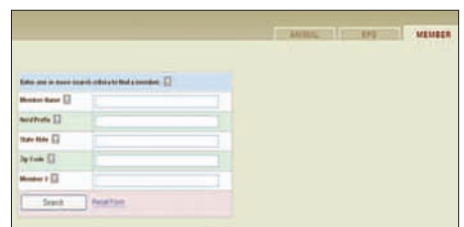


Figure C



## Member Data - Reds RRTS Registrations/Performance Updates

You will notice that the options available now appear in one list. Those options which begin with VIEW-only enable you to see information already on file in the database. These options do not allow you to add or change any information.

